

# NOAA - Current Status and Priorities

*Steve Smith, NOAA/NWS  
Mark Osler, NOAA/NOS  
Gina Eosco, NOAA/OAR*

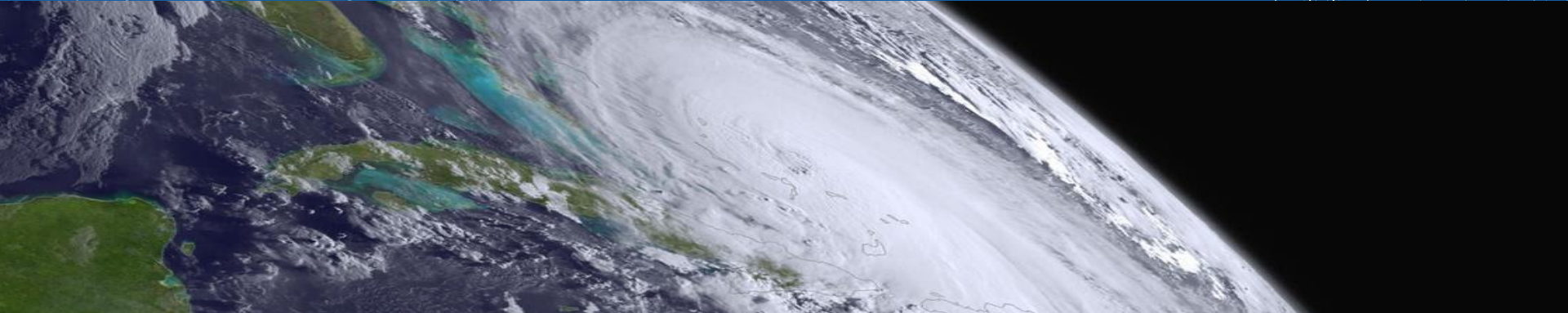
*September 10, 2025*



# Modeling For Mission, Services and Outcomes

Steve Smith

Director, NWS Office of Science and Technology Integration  
Director, NWS National Centers for Environmental Prediction (acting)



# NOAA NOS's Current Status and Future Priorities

Mark Osler

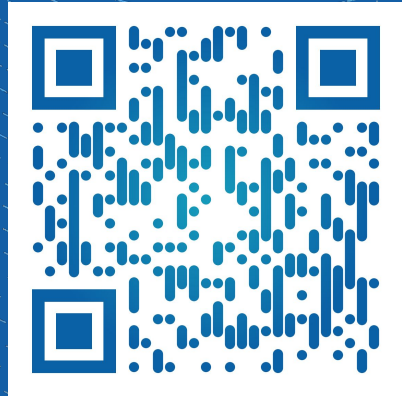
*Senior Advisor for Coastal Inundation and Resilience*



# NOAA OAR's Current Status and Future Priorities

*Gina Eosco, WPO Director*

[Link to CMC Nomination Form](#)



## Announcement:

- We have formed an **Ad Hoc Community Modeling Committee (CMC)** under the AMS WWCE Commission
- Nominations to become a member opens **today!** Self-nominations are accepted. *(Scan the QR code)*
- Announcements for member nominations will also go out via various channels next week (AMS community forum, UFS mailing list, etc)

